

Work Tracker Lite

Planning → Measuring → Analyzing → Improving

Installation Guide

Work Tracker Lite is a software suite developed by *FadeOut Software* with the aim of simply controlling and monitoring the real costs of any single job order.

Work Tracker Lite needs SQL Server 2005, Full or Express Version.

Installation guide is composed by two parts:

- Installing and configuring Microsoft SQL Server 2005 Express Edition;
- Installing **Work Tracker Lite Admin** and **Work Tracker Lite Client**;

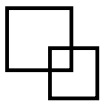
If you DON'T HAVE Microsoft SQL Server 2005 (Express or Full) yet you can read the apposite guide.

Installing Work Tracker Lite Admin from Internet

After you have installed Microsoft SQL Server 2005 you can install **Work Tracker Lite Admin**.

WARNING: Firefox users have to install the FFClickOnce plugin or use Internet Explorer to install Work Tracker Lite!

1. Browse to www.worktrackerlite.it to download the software:



FadeOut Software Work Tracker Lite Admin

Nome: Work Tracker Lite Admin

Versione: 1.0.4.20

Editore: FadeOut Software

Sono necessari i seguenti prerequisiti:

- Microsoft Data Access Components 2.8
- .NET Framework 2.0
- Crystal Reports for .NET Framework 2.0

Se questi componenti sono già installati, è possibile [avviare](#) l'applicazione subito. In caso contrario, scegliere il pulsante sottostante per installare i prerequisiti ed eseguire l'applicazione.

Installa

[Supporto tecnico di FadeOut Software](#) :: [Risorse ClickOnce e .NET Framework](#)

Figure 1 – WTL download page

2. Click on the “Install” button;

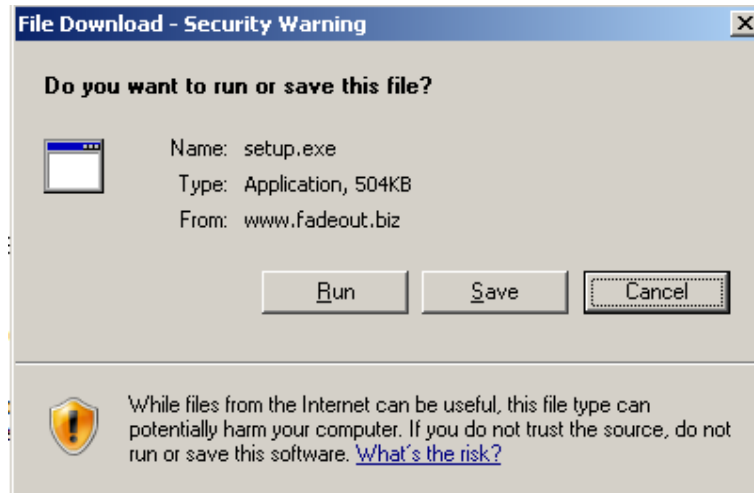


Figure 2 – Start download

3. Click on the Run button;
4. Your PC will download the setup, recognize the software and ask for confirm: click on Run;

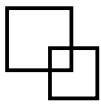


Figura 3 - Installazione firmata

5. To proceed read Setup installation;

Installing Work Tracker Lite Admin from the Setup

1. Double click on setup.exe;
2. If you don't have the prerequisites the Setup will download the .NET Framework 2.0 and Crystal Report components: proceed with the installation;

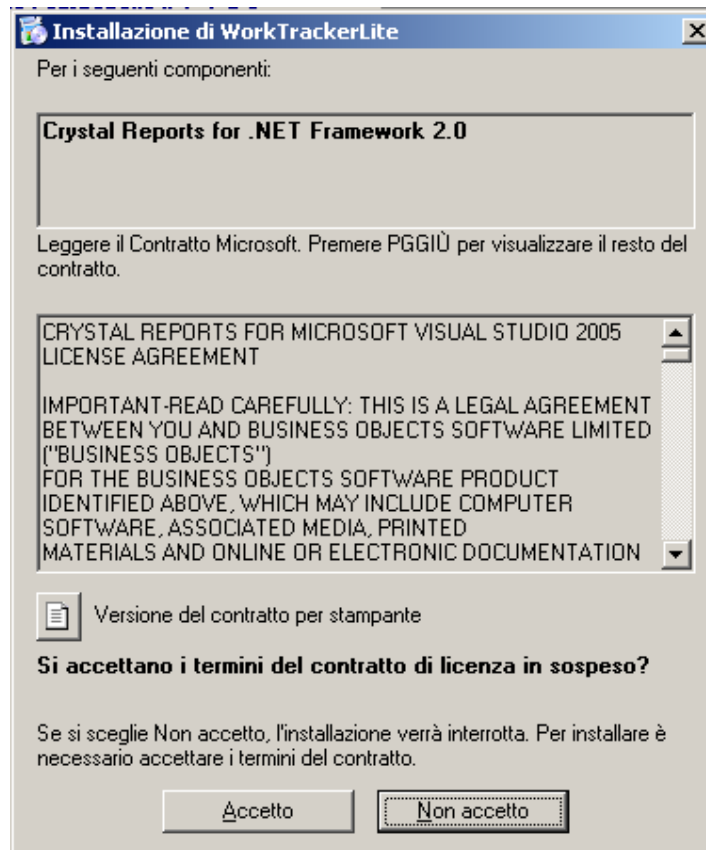
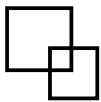


Figure 4 – Prerequisites installation

3. You will be asked to confirm to install **Work Tracker Lite Admin**: click on Install;

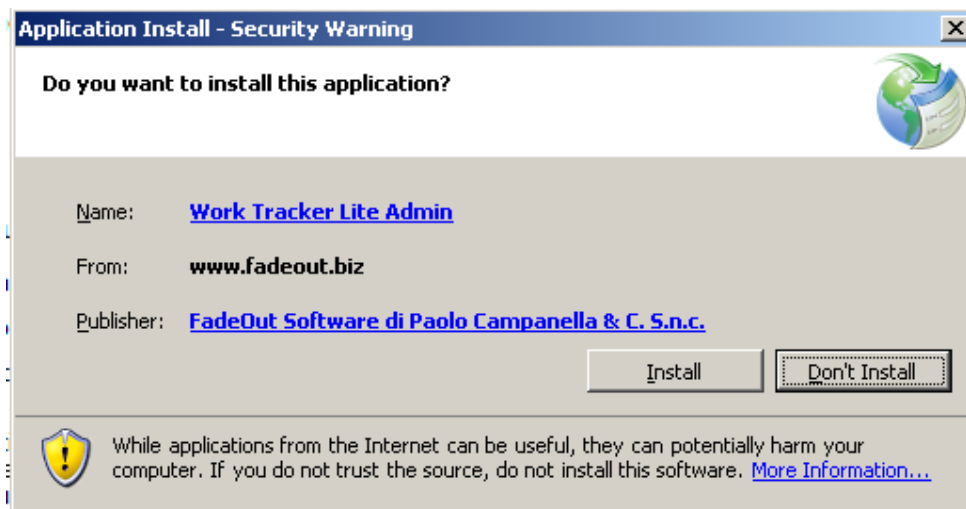


Figura 5 - Avvio Installazione

4. **Work Tracker Lite Admin** will show the Configuration Wizard:

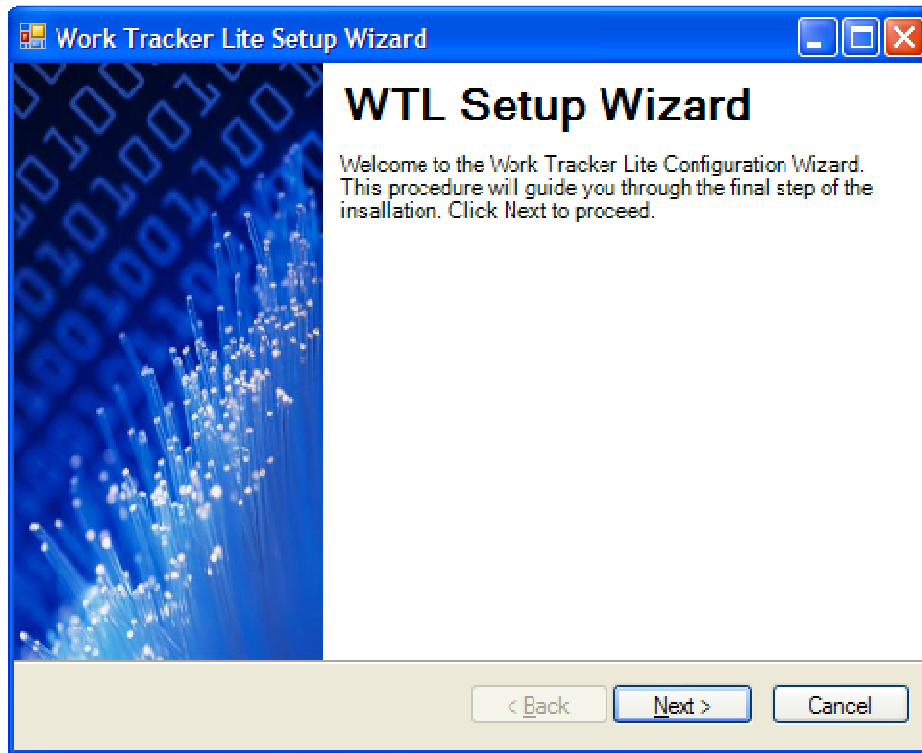
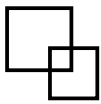


Figura 6 – Configurazione Guidata WTL

5. The software will browse for installed SQL Server on your local network: is possibile to select one or to type the name of the Server;

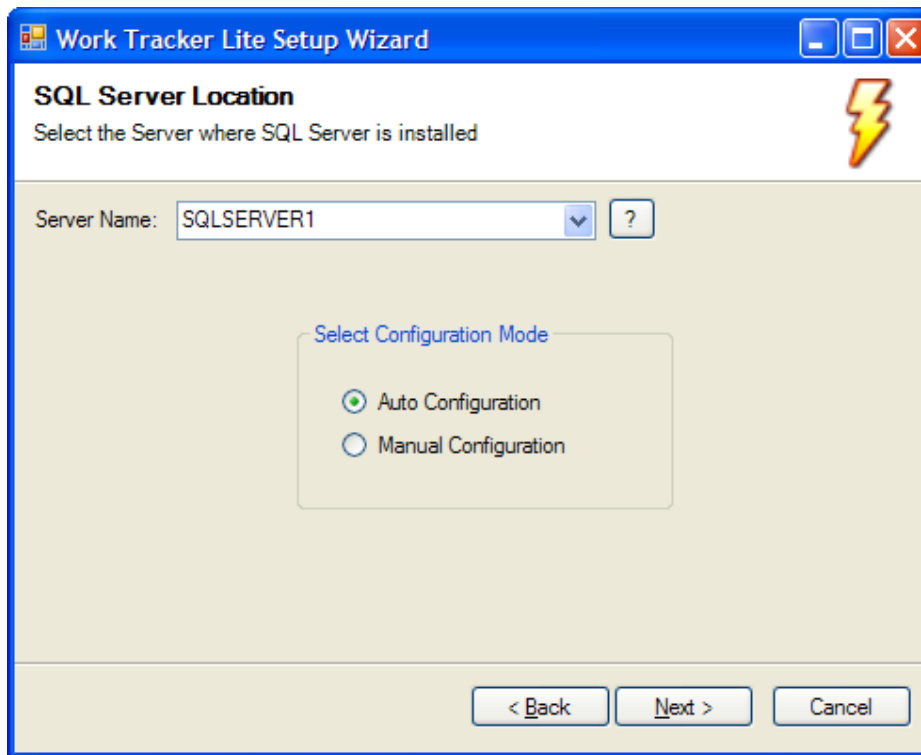
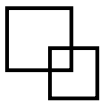


Figure 7 – Sql Server Location

Configuration Mode: *the Auto Configuration will search for the Work Tracker Lite Database and if it will not found will ask for creation. We suggest to use Auto Configuration for but advanced users.*

6. If the Database was found proceed to step 9;

Else if the database was not found the wizard will show this form:

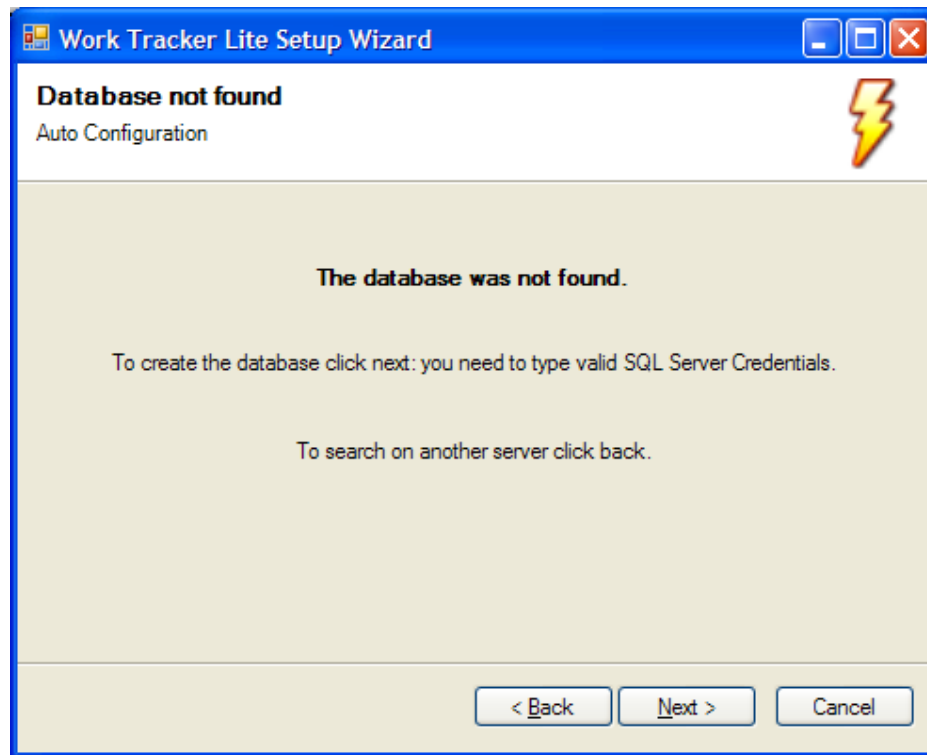
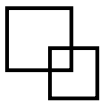


Figura 8 - Database no found

You can click back to search on another Server or click Next to create the Database on the selected Server;

7. If you have to create the Database you need to type SQL Server Credentials:

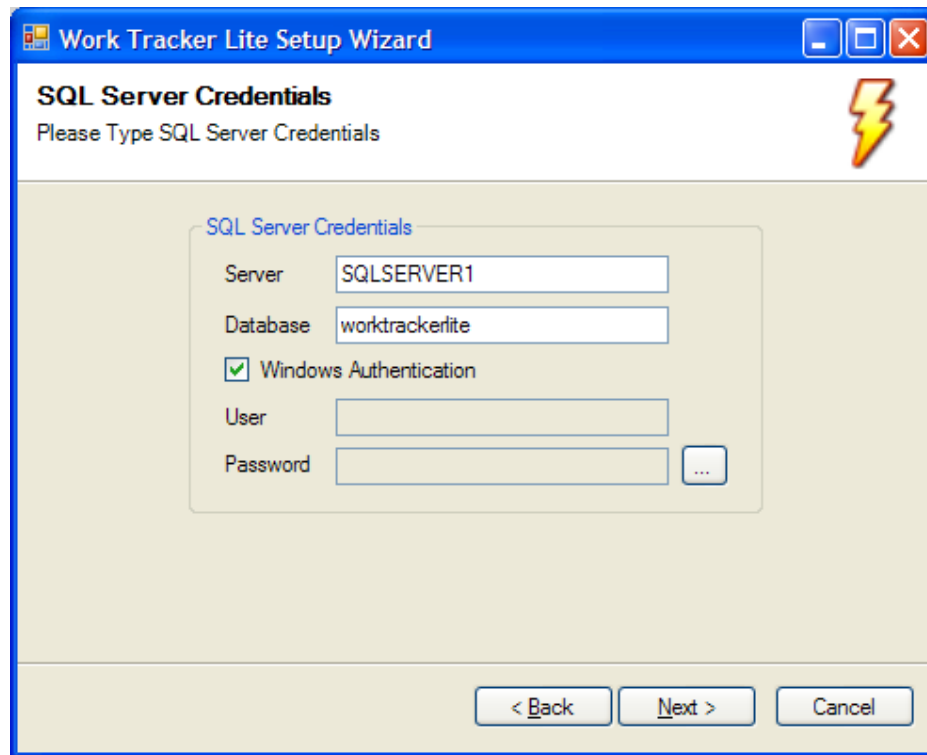
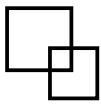


Figura 9 - SQL Server Credentials

Click next to create the Database;

8. The wizard will create Database;

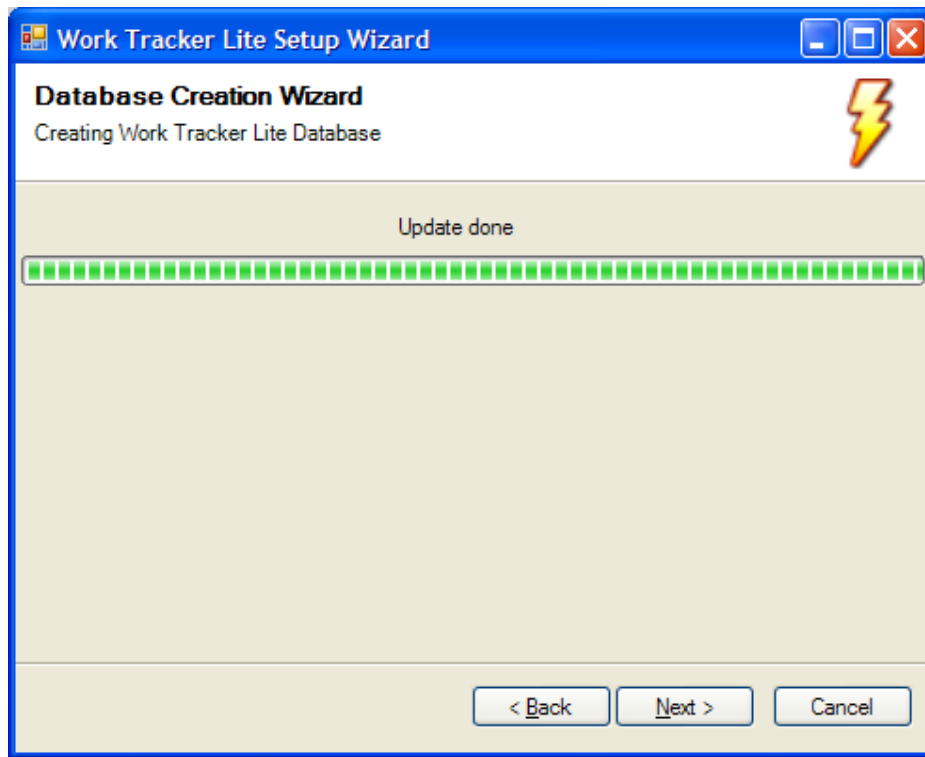
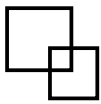


Figura 10 – Database Creation

9. The final page will show you the configuration result:

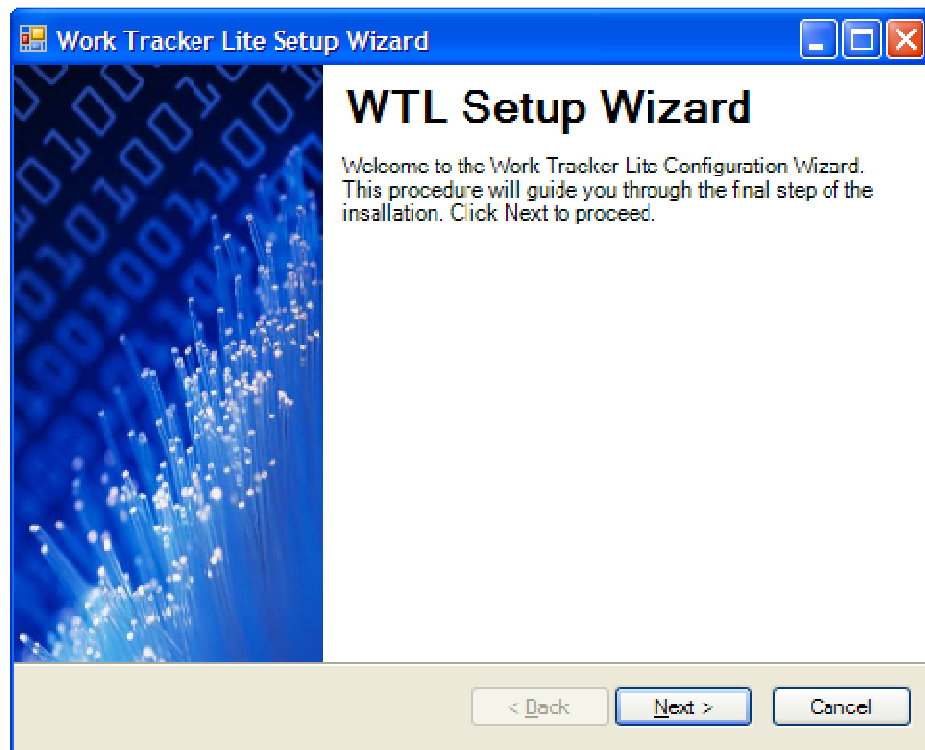
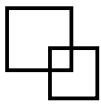
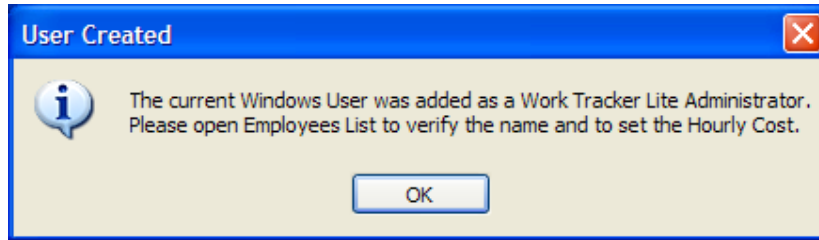


Figura 11 – End Page



10. Work Tracker Lite tries to create an Admin User for the current Windows User;



The auto insert can be wrong on the Name and Surname; you have also to insert an hourly cost for the new user. We suggest to open the Employee List.

11. Open Employee List;

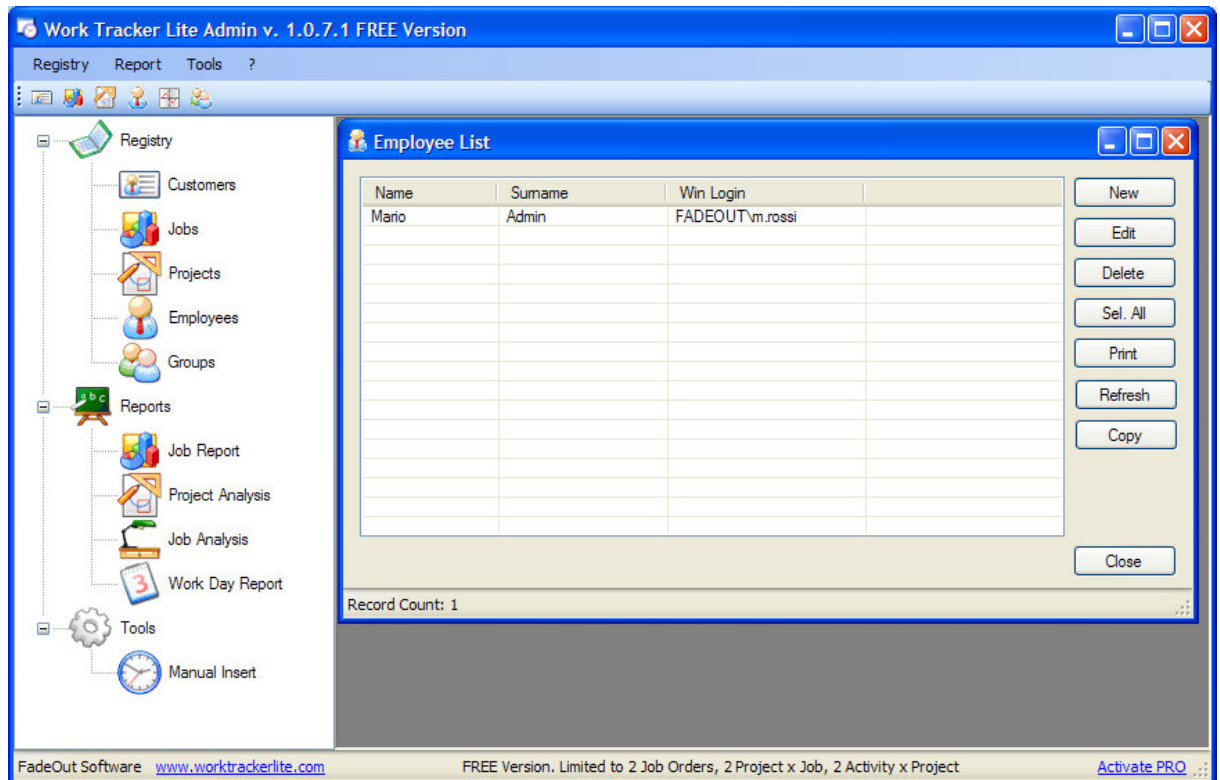
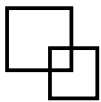


Figura 12 - Elenco del personale

12. Update the auto created user setting at least an hourly cost: by this way the current user will be automatically logged by the Software. You can also now insert all the other users, or you can do this later;



Dettagli Personale

Nome: Mario Cognome: Rossi

Utente Windows: SRV-VRT00\Administrator Gruppo: []

Utente Amministratore Utente Anonimo

Lista Retribuzioni

Retribuzione Oraria	Data Inizio	Data Fine	Retribuzione Attuale
20	16/02/20...	16/02/20...	True

Nuova Salva Elimina

Retribuzione

Retribuzione Oraria: 0 € Retribuzione Attuale

Data Inizio: 16/02/2008 Data Fine: 16/02/2008

Cancel Ok

Figura 13 – Employee Mask

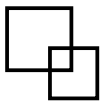
Now the Software is installed and configured. This Wizard is done **only once**.

WARNING:

If you don't have at least one user **Work Tracker Lite Admin** will ask for Super Admin Credentials: type

User : "Admin"

Password : "AdminOriginal"



Installing Work Tracker Lite Client

After you have installed SQL Server and at least a copy of **Work Tracker Lite Admin** you can install the Client Version on the others PC. We suggest to add all the employees before installing the client on the user's Computer.

To install **Work Tracker Lite Client** follow this steps:

1. Browse to www.worktrackerlite.it and download the software or double click on setup.exe if you have just downloaded it;
2. FROM INTERNET ONLY: Click on "Install" button;
3. FROM INTERNET ONLY: Click on "Run" button;
4. FROM INTERNET ONLY: the PC will download the setup, and ask for confirm: click on "Run" button;
5. If your PC Needs the prerequisites the Setup will download and install the .NET Framework 2.0: install to proceed;
6. You will be asked for **Work Tracker Lite Client** installation confirm: click on "Install";
7. Type the name of the SQL Server where the Database was installed;

Now **Work Tracker Lite Client** is installed and configured and you can start recording time on the assigned activities.

Warning

The install configuration creates the Database using configuration scripts. If you have some troubles with the Wizard maybe for your Company Policy, you can mail to segnalazioni@fadeout.biz to obtain .sql scripts for a manual Database Installation.