

Work Tracker Lite

Planning → Measuring → Analyzing → Improving

Installation Guide

Work Tracker Lite is a software suite developed by *FadeOut Software* with the aim of simply controlling and monitoring the real costs of any single job order.

Work Tracker Lite needs SQL Server 2005, Full or Express Version.

Installation guide is composed by two parts:

- Installing and configuring Microsoft SQL Server 2005 Express Edition;
- Installing **Work Tracker Lite Admin** and **Work Tracker Lite Client**;

If you have just installed Microsoft SQL Server 2005 (Express or Full Edition) can read the Installing **Work Tracker Lite Admin** and **Work Tracker Lite Client** Installation Guide and leave this guide.

Installing Microsoft SQL Server 2005

All the PC using **Work Tracker Lite Admin** and/or **Work Tracker Lite Client** needs to reach the Server where Microsoft SQL Server 2005 is installed.

To install Microsoft SQL Server 2005 Express Edition follow this steps:

1. Download Microsoft SQL Server 2005 Express Edition from:
<http://www.microsoft.com/downloads/details.aspx?FamilyID=220549B5-0B07-4448-8848-DCC397514B41&displaylang=en>; the file to download is: SQLEXPRESS_ITA.EXE

WARNING: if this link is broken search on Google “sql server 2005 express” to find the updated address. Microsoft SQL Server 2005 Express Edition is free for download.

2. Click “Run” button to execute the file:

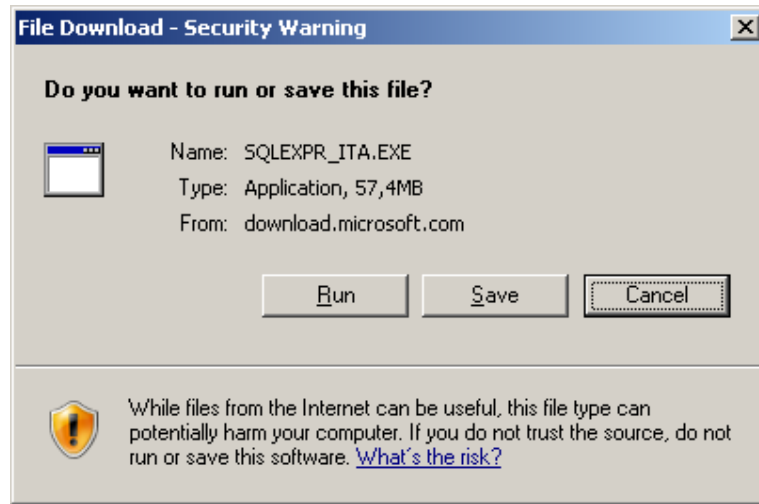
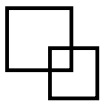


Figure 1 - Download SQL Server 2005 Express

3. SQL Server will check for prerequisite and download them;

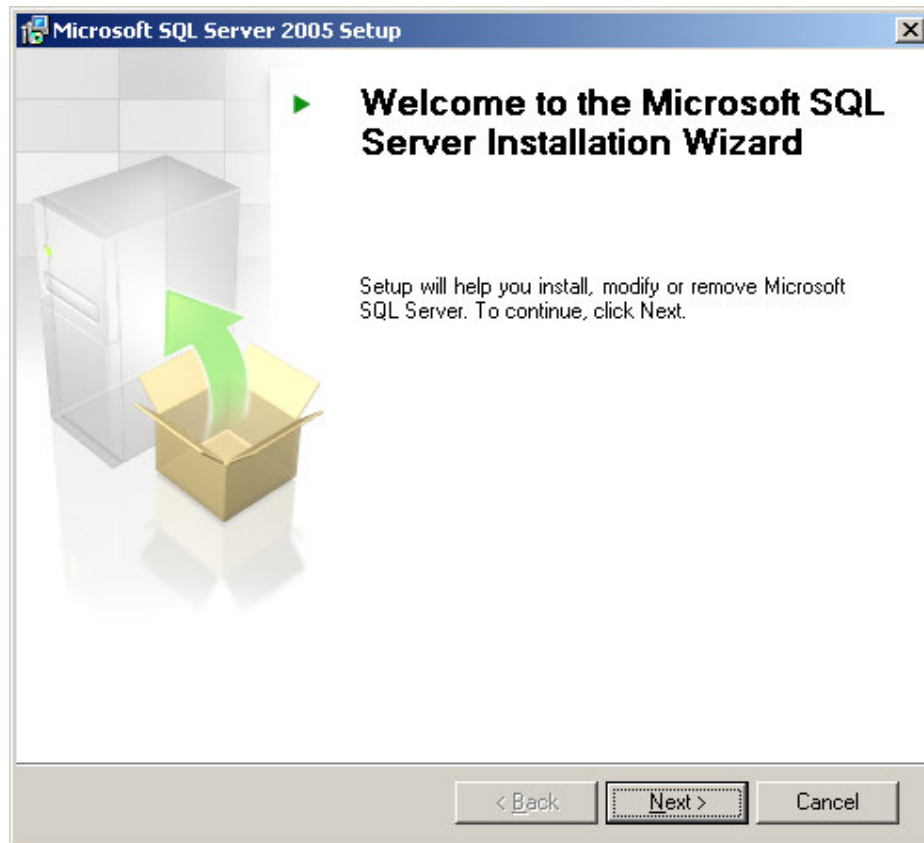


Figure 2 - SQL Server Installation Wizard

4. Leave "Hide Advanced Options" checked;

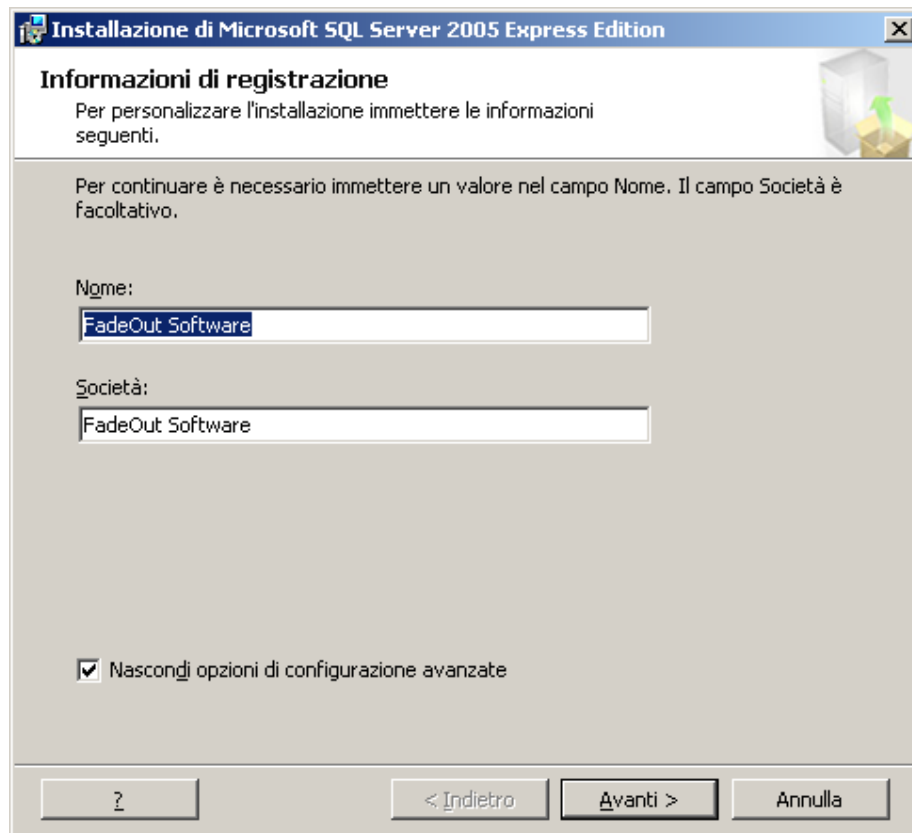
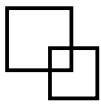


Figure 3 - SQL Server Installation

5. Click Next;

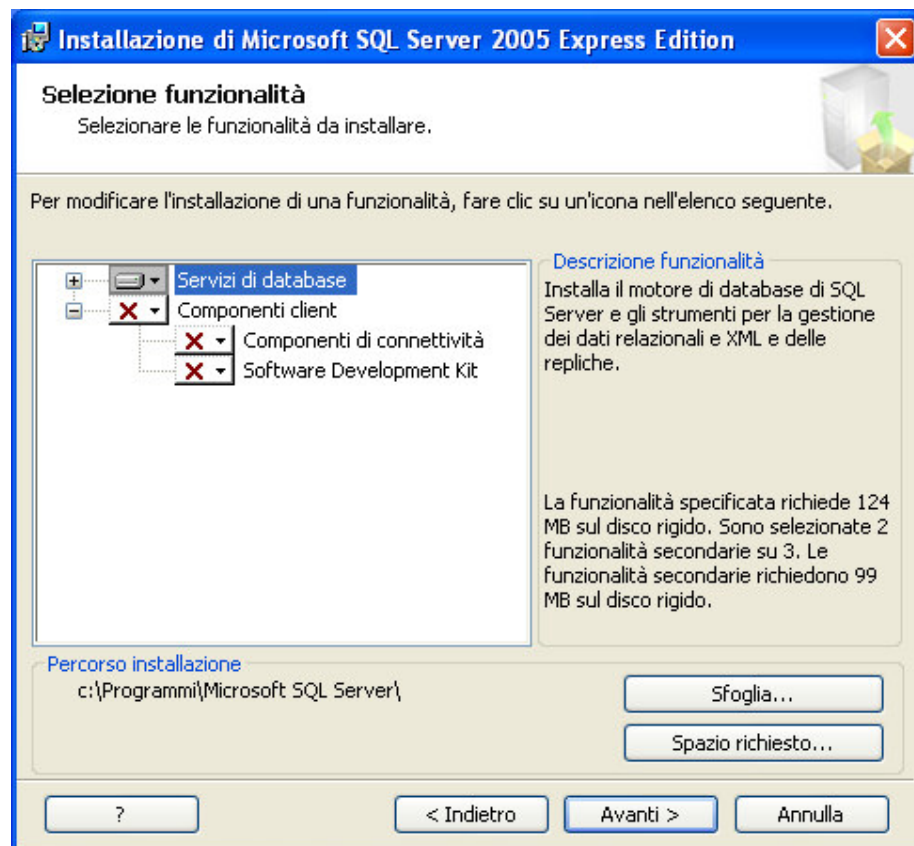
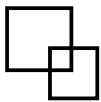


Figure 4 – Select Components

6. Click next to the authentication mode page:

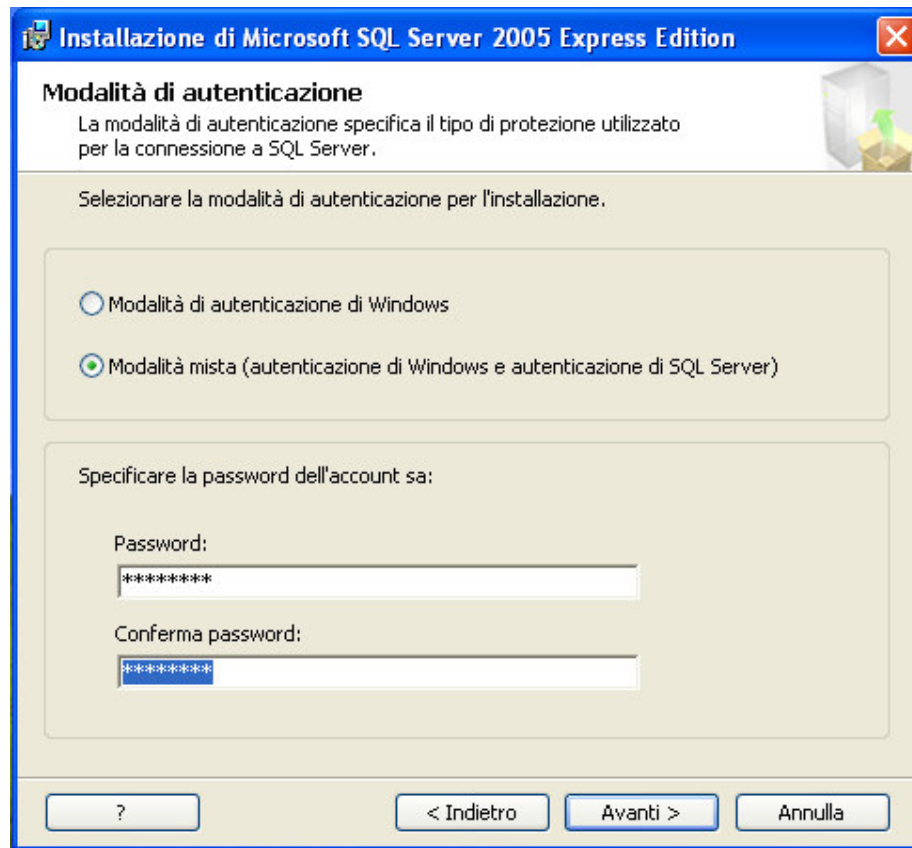
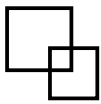


Figure 5 – Mixed Mode

Select Mixed Mode and type a password for the Server Administrator “sa”.

7. Add the current user as SQL Server Administrator

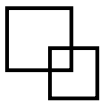
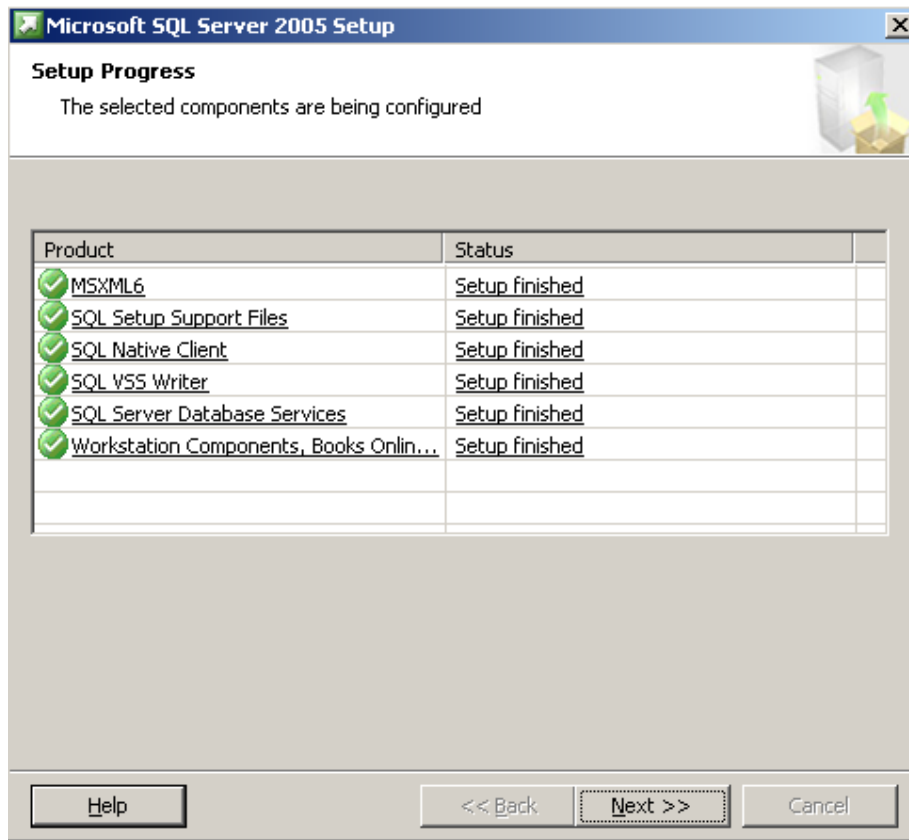
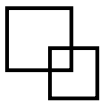
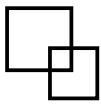


Figure 6 – Add the current user as Administrator

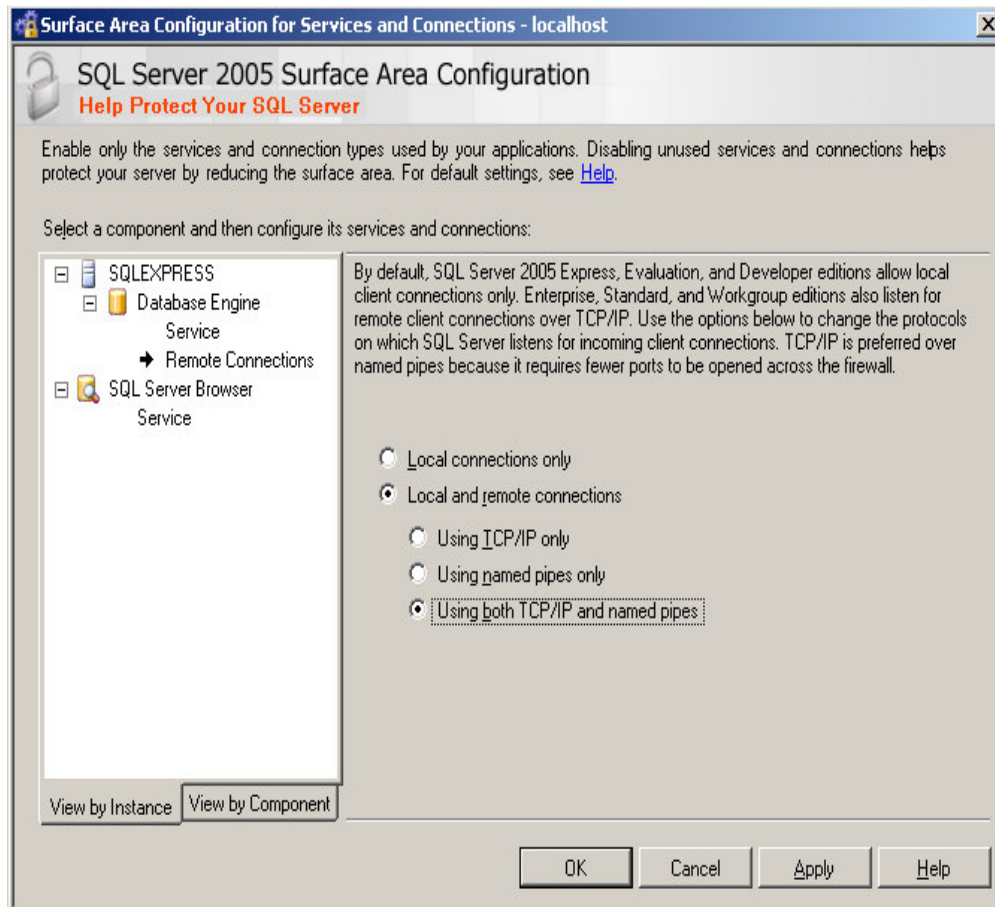
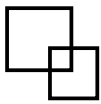
8. Click next until the end of the wizard;



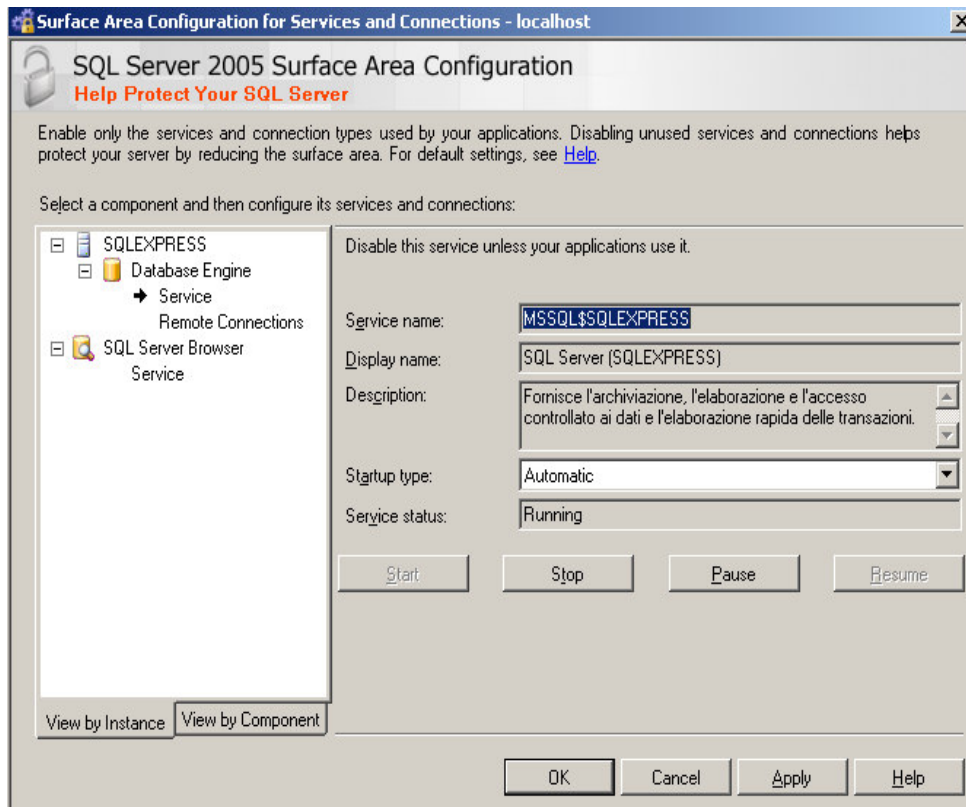
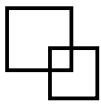
9. Go on the Windows Start Menu, All programs, Microsoft SQL Server 2005, Configuration Tools, SQL Server 2005 Surface Area Configuration;



10. Select “Surface Area Configuration for Services and Connections”;
11. Select the “Remote Connections” node: then select “Locate and Remote Connections” and “Using Both TCP/IP and named pipes” and click the “Apply” button;



12. Select Service Node: select Stop button and then Start button to restart the service;



13. Click ok and exit;

Now Microsoft SQL Server 2005 Express is installed and you can proceed to install **Work Tracker Lite Admin** e **Work Tracker Lite Client**; read the dedicated guide for help.